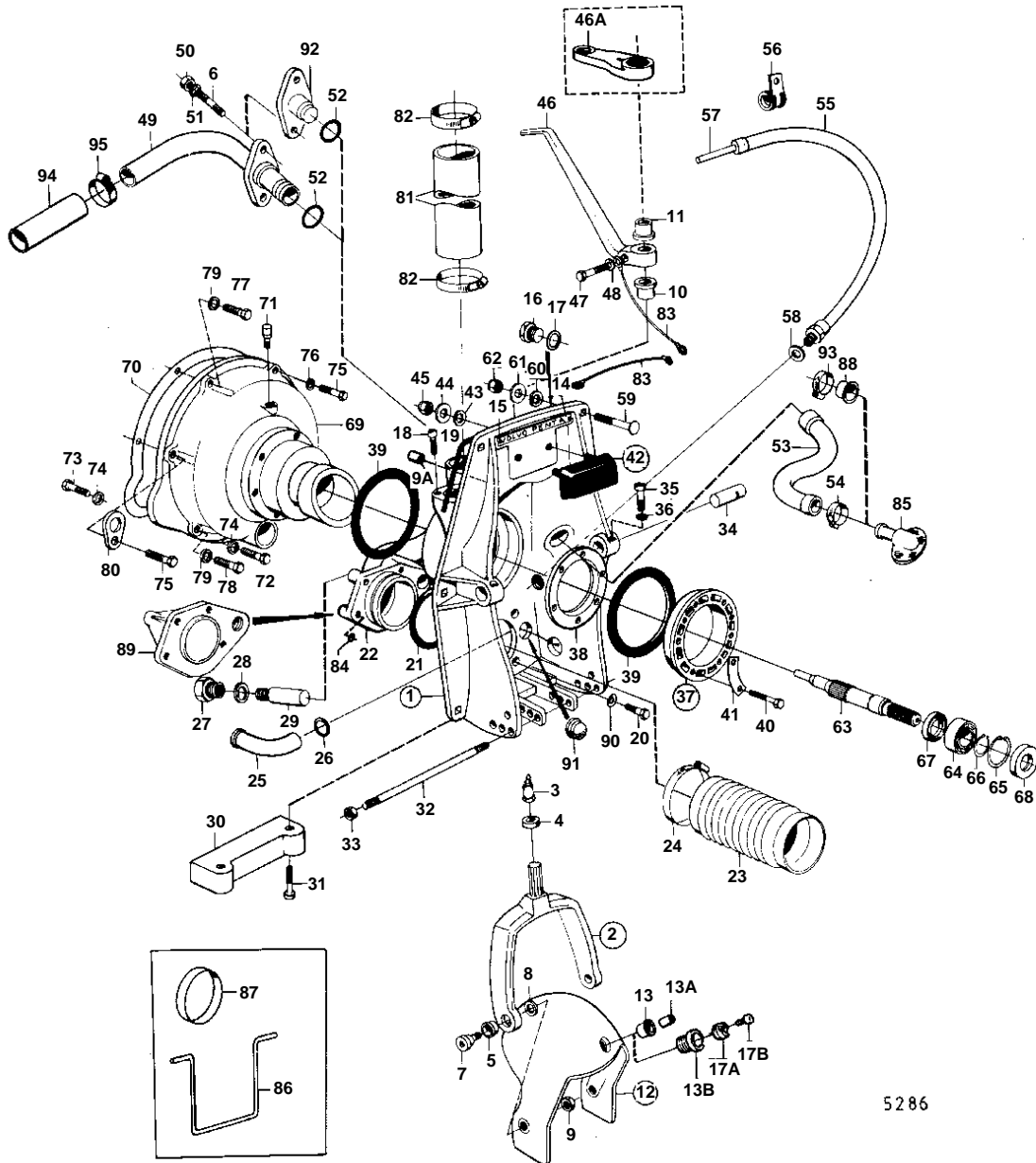


AQD21A



5286

AQD21A

REF	PART NO.	QTY	DESCRIPTION	SEE SEC.	NOTES
1	875532	1	Tensioning ring		FOR EARLY TYPE OF STEERING SYSTEM., REPLACED BY 1EA 875671 1EA 851265 1EA 851263 2EA 941807.
		1			FOR LATE TYPE OF STEERING SYSTEM., REPLACED BY 1EA 875671 1EA 851265 1EA 851263 2EA 941807., MO-XXXX/187079
	875671	1	Shield		MOXXXX/187080-
2	839377	1	• Steering yoke		MO-XXXX/80274
	839441	1	• Steering yoke		MOXXXX/80275-
3	914169	1	• • Lubricating nipple		
4	814359	1	• • Ring		MO-XXXX/80274
	839195	1	• • Ring		MOXXXX/80275-
			Bulletin 48-23	48-23-EN	Seal Ring
5	814640	2	• • Bushing		
6	941872	2	• Stud		
7	897798	2	• Shoulder screw		
8	897244	2	• Washer		
9	943152	2	• Nut		
9A	850653	1	• Bushing		FOR LATE TYPE OF STEERING SYSTEM., SEE GROUP 6
10	897731	1	• Bushing		MO-XXXX/80274
	832651	1	• Bushing		MOXXXX/80275-
11		1	• Bushing		MO-XXXX/80274
	832652	1	• Bushing		MOXXXX/80275-
12	814684	1	• Protective helmet		FOR EARLY TYPE OF STEERING SYSTEM.
	839592	1	• Protective helmet		FOR LATE TYPE OF STEERING SYSTEM., MO-XXXX/187079
	851267	1	• Protective helmet		MOXXXX/187080-
13	814641	1	• • Bushing		FOR EARLY TYPE OF STEERING SYSTEM., FOR 1/2"-13UNC SCREW.
		1	• • Bushing		FOR LATE TYPE OF STEERING SYSTEM., FOR M18 BOLTS.
13A	839697	1	• • Bearing ball		FOR LATE TYPE OF STEERING SYSTEM., MO-XXXX/187079
13B	851262	1	• • Bushing		FOR BEARING PIN WITH 2 BOLTS.
14	832608	1	• Plate		
15	804269	2	• Drive screw		
16		1	• Plug		MOXXXX/94050-
17	897745	1	• Gasket		MOXXXX/94050-
17A	852705	1	Pivot pin, BEARING TAP		(851263)
17					MOXXXX/187080-
					REPL BY 852705
17B	941807	2	Hex. socket screw		MOXXXX/187080-
18	956568	2	Hex. socket screw		SEE GROUP 9
19	897726	1	Sealing strip		
20	959967	4	Hexagon screw		
21	925256	1	O-ring		
22	897782	1	Exhaust grommet		
23	897631	1	Exhaust bellows		EARLY TYPE
	850443	1	Exhaust bellows		FOR AQ DRIVE UNIT 280., LATE TYPE
24	961675	2	Hose clamp		
25	897773	1	Water outlet pipe		FOR EARLY TYPE OF STEERING SYSTEM.
	843235	1	Exhaust pipe		FOR LATE TYPE OF STEERING SYSTEM.
26		1	Washer		FOR EARLY TYPE OF STEERING SYSTEM.
27		1	Plug		
28	897745	1	Gasket		
29		1	ZINC ELECTRODE		EARLY TYPE REPLACED BY 1EA 832598, 2EA 959438.
30	832598	1	Zinc anode		
31	959438	2	Hex. socket screw		
32	814301	1	Adjusting pin		
33	814357	2	Flange nut		
34	897831	2	Pivot pin		
35	941873	2	Hex. socket screw		
36	941670	2	Washer		
37	826941	1	Mounting kit		

AQD21A

REF	PART NO.	QTY	DESCRIPTION	SEE SEC.	NOTES
38	813964	1	· Spacer ring		LATE TYPE
39	813967	2	· Rubber ring		
40	191844	6	· Hexagon screw		
41	806624	3	· Striker plate		
42	875379	1	Rubber cushion		MO-XXXX/80274
	875531	1	Rubber cushion		MOXXXX/80275-
43	832565	2	· Gasket		
44	960142	2	· Washer		
45	950364	2	· Lock nut		
46		1	Spindle arm		FOR EARLY TYPE OF STEERING SYSTEM., MO-XXXX/80274
	839459	1	Spindle arm		FOR EARLY TYPE OF STEERING SYSTEM., MOXXXX/80275-
46A	850488	1	Spindle arm		FOR LATE TYPE OF STEERING SYSTEM.
47	955536	1	Hexagon screw		MO-XXXX/80274
	955537	1	Hexagon screw		MOXXXX/80275-
48	940097	1	Washer		
49	826819	1	Grommet		
50	950352	2	Lock nut		
51	955893	2	Washer		
52	925063	1	O-ring		
53		1	Hose		
54	961668	2	Hose clamp		
55	839091	1	Protecting hose		
56	952635	1	Clamp		
57		X	CONTROL CABLE		SEE GROUP 9
58	897745	1	Gasket		
59	943426	6	Screw		
60	850418	6	O-ring		(814166)
61	190878	6	Washer		
62	940176	6	Hexagon nut		
63		1	Spindle		
64	11013	1	Ball bearing		
65	914533	2	Snap ring		
66	914462	1	Snap ring		
67	946242	1	Sealing ring		
68	958860	1	Sealing ring		
69		1	Flywheel housing		
70	826765	1	Gasket		SEE GROUP 2A
71		1	Lubricator		
72	940142	2	Hexagon screw		L = 30 MM
73	955297	1	Hexagon screw		L = 25 MM
74	955894	3	Washer		
75	955318	1	Hexagon screw		S.B L = 30 MM
	955319	1	Hexagon screw		P L = 35 MM
76	955895	1	Washer		
77	959667	1	Hexagon screw		L = 50 MM SEE GROUP 2A
78		2	Hexagon screw		L = 70 MM SEE GROUP 2A
79	940280	3	Spring washer		SEE GROUP 2A
80		1	LIFT EYE		SEE GROUP 2A
81	952980	X	Hose		L = 170 MM SEE GROUP 2B
82	943480	4	Hose clamp		SEE GROUP 2B
83		X	CABLES AND CABLE TERMINALS		SEE GROUP 3
84	925055	4	O-ring		
85	851766	1	Hose connection		SEE GROUP 4C
86	897824	1	Transport lock		FOR TRANSPORT.
87	944738	1	Plug		FOR TRANSPORT.
88		1	Plastic plug		USED WHEN SEPARATE EXHAUST OUTLET AND WATER INTAKE IS INSTALLED., SEE GROUP 9
89		1	Seal flange		USED WHEN SEPARATE EXHAUST OUTLET AND WATER INTAKE IS INSTALLED., SEE GROUP 9

AQD21A

REF	PART NO.	QTY	DESCRIPTION	SEE SEC.	NOTES
90	942336	4	Spring washer		USED WHEN SEPARATE EXHAUST OUTLET AND WATER INTAKE IS INSTALLED., SEE GROUP 9
91	814473	1	Rubber plug		USED WHEN SEPARATE EXHAUST OUTLET AND WATER INTAKE IS INSTALLED., SEE GROUP 9
92		1	Seal flange		USED WHEN SEPARATE EXHAUST OUTLET AND WATER INTAKE IS INSTALLED., SEE GROUP 9
93	961669	1	Hose clamp		USED WHEN SEPARATE EXHAUST OUTLET AND WATER INTAKE IS INSTALLED., SEE GROUP 9
94	941799	X	Hose		L = 450 MM
95	961669	2	Hose clamp		
	943476	2	Hose clamp		
	875192	1	Gasket kit		SEE GROUP 10